

Qty. Description

1 **Unilift KP 350 AV 1**



Note! Product picture may differ from actual product

Product No.: **013N1400**

Submersible drainage pump

Vertical single-stage stainless steel submersible pump with vertical discharge port and integrated

Phase: submersible 1-phase canned motor in insulation class F with thermal overload protection.

The pump is fitted with suction strainer and a

Cable length: carrying handle and is supplied with a 5 m mains cable and vertical level switch for automatic start and stop.

The impeller is a semi-open impeller for 10 mm free passage suitable for pumping groundwater, surface water, rain water and similar liquids.

The pump has a double shaft seal consisting of two lip seals with grease in-between.

The pump has an outer casing ensuring continuous cooling of the motor by the pumped liquid. The rotor shaft operates in two maintenance-free carbon bearings cooled by the pumped liquid

The motor is filled with a non-toxic motor liquid.

Liquid:

Liquid temperature range: 0 .. 50 °C

Density: 998.2 kg/m³

Technical:

Maximum particle size: 10 mm

Materials:

Pump housing: Stainless steel
DIN W.-Nr. 1.4301
AISI 304

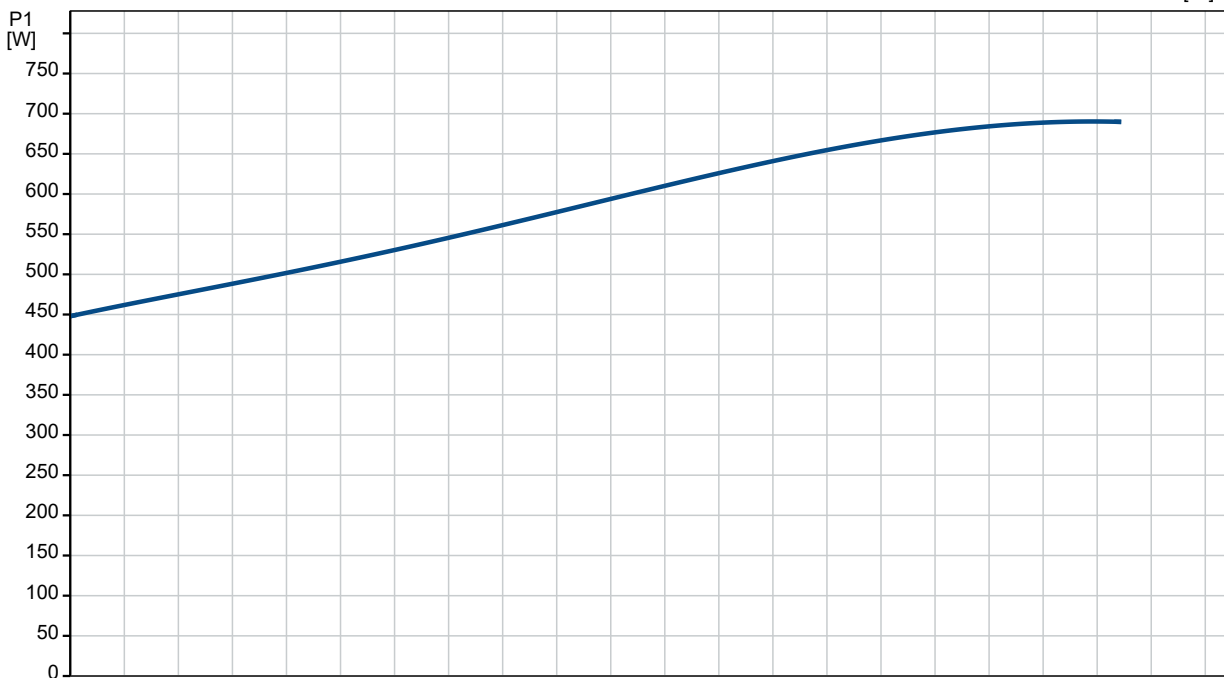
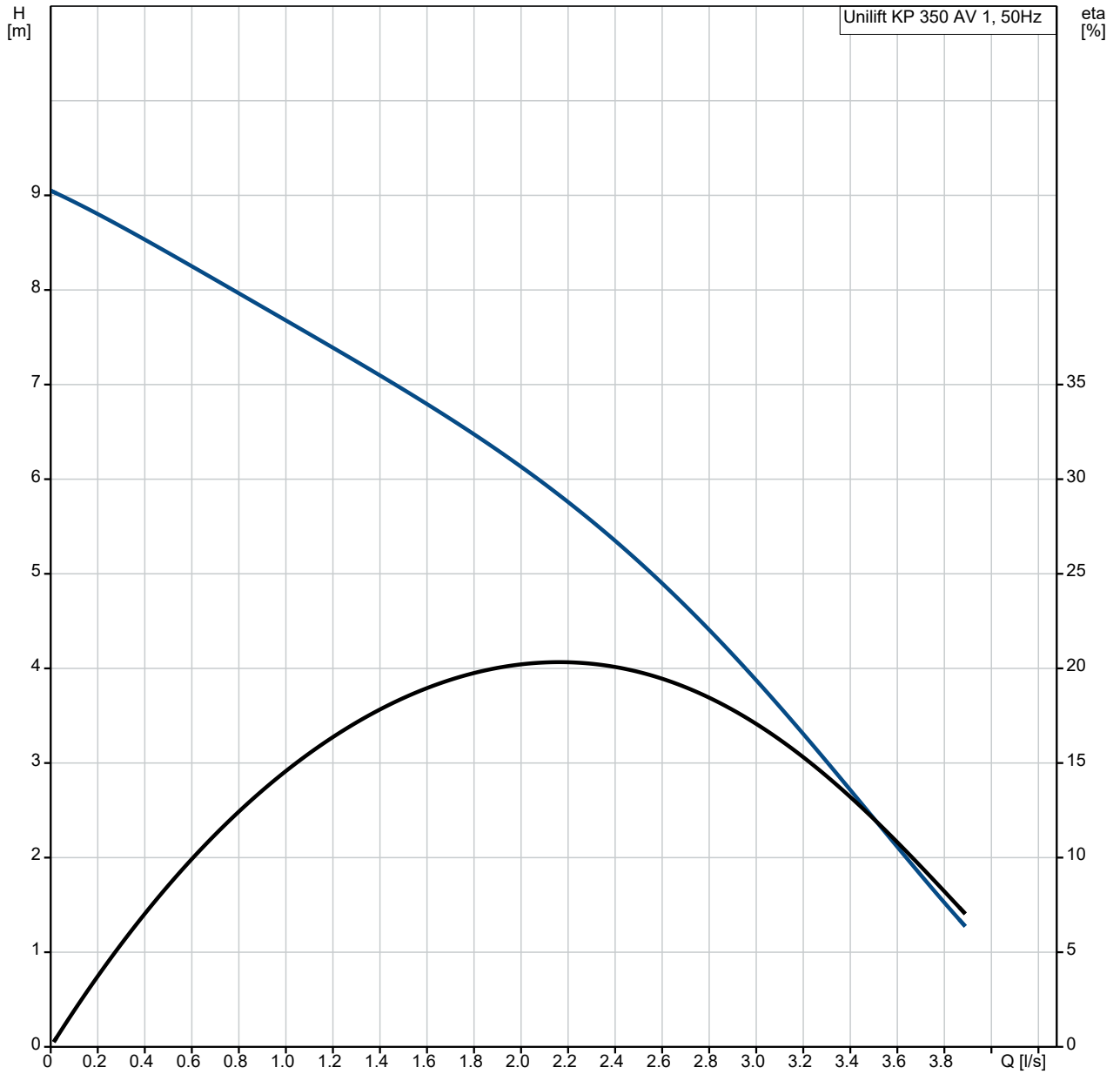
Impeller: Stainless steel
DIN W.-Nr. 1.4031
AISI 304

Installation:

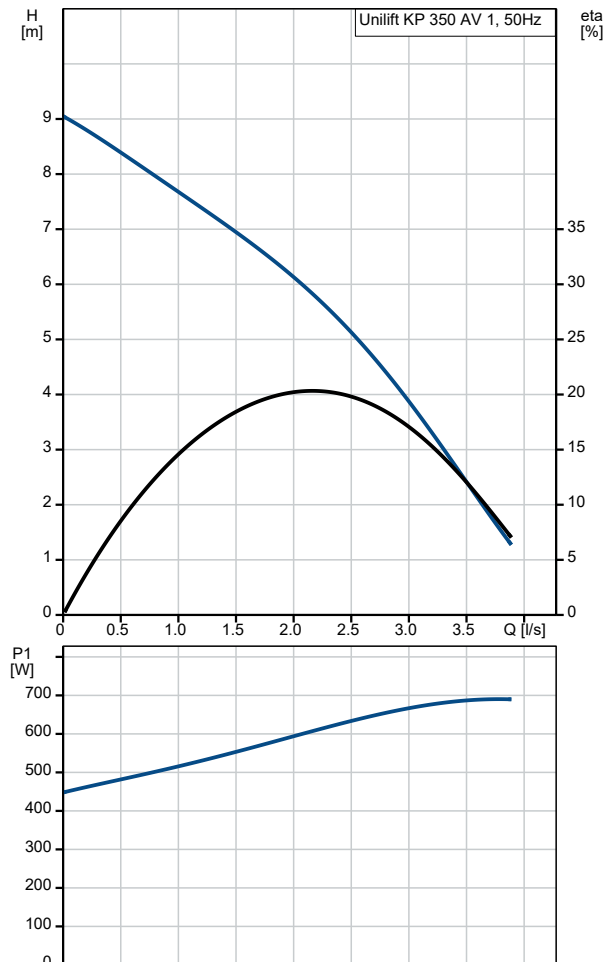
Pump outlet: Rp 1 1/4

Qty.	Description
	<p>Maximum installation depth: 2 m</p> <p>Electrical data:</p> <p>Power input - P1: 700 W</p> <p>Mains frequency: 50 Hz</p> <p>Rated voltage: 1 x 220-240 V</p> <p>Rated current: 3.2 A</p> <p>Capacitor size - run: 10 µF/400 V</p> <p>Enclosure class (IEC 34-5): IP68</p> <p>Insulation class (IEC 85): F</p> <p>Length of cable: 5 m</p> <p>Type of cable plug: SCHUKO</p> <p>Others:</p> <p>Net weight: 7.5 kg</p> <p>Gross weight: 8 kg</p> <p>Shipping volume: 0.013 m³</p>

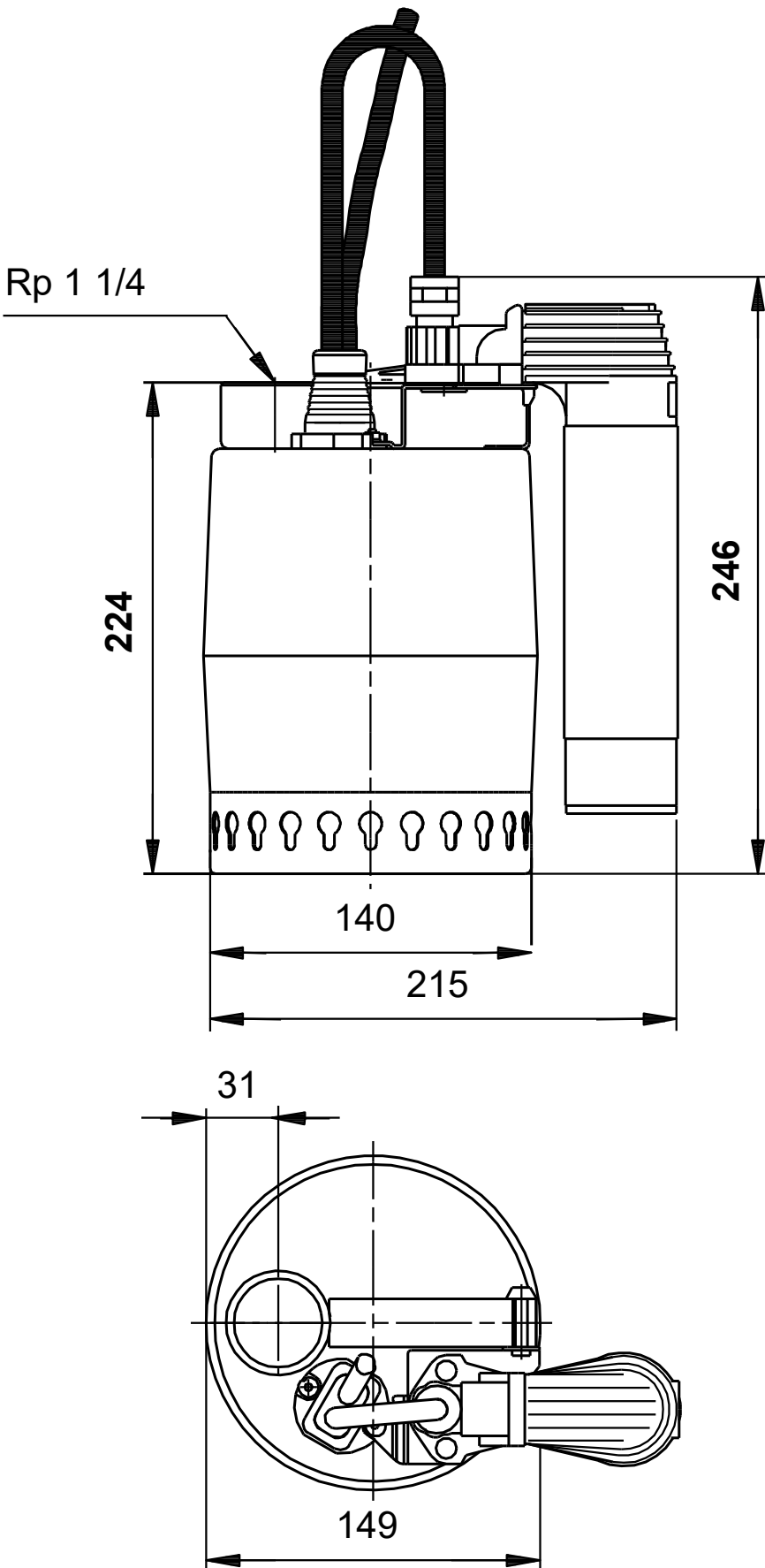
013N1400 Unilift KP 350 AV 1 50 Hz



Description	Value
General information:	
Product name:	Unilift KP 350 AV 1
Product No:	013N1400
EAN number:	5700393433236
Price:	
Technical:	
Maximum flow:	3.89 l/s
Max flow:	3.89 l/s
Head max:	9 m
Maximum particle size:	10 mm
Model:	A
Materials:	
Pump housing:	Stainless steel
Pump housing:	DIN W.-Nr. 1.4301
Pump housing:	AISI 304
Impeller:	Stainless steel
Impeller:	DIN W.-Nr. 1.4031
Impeller:	AISI 304
Installation:	
Pump outlet:	Rp 1 1/4
Maximum installation depth:	2 m
Liquid:	
Liquid temperature range:	0 .. 50 °C
Density:	998.2 kg/m ³
Electrical data:	
Power input - P1:	700 W
Mains frequency:	50 Hz
Rated voltage:	1 x 220-240 V
Rated current:	3.2 A
Capacitor size - run:	10 µF/400 V
Enclosure class (IEC 34-5):	IP68
Insulation class (IEC 85):	F
Motor protec:	CONTACT
Thermal protec:	internal
Length of cable:	5 m
Type of cable plug:	SCHUKO
Controls:	
Level switch:	vertical level switch
Others:	
Net weight:	7.5 kg
Gross weight:	8 kg
Shipping volume:	0.013 m ³

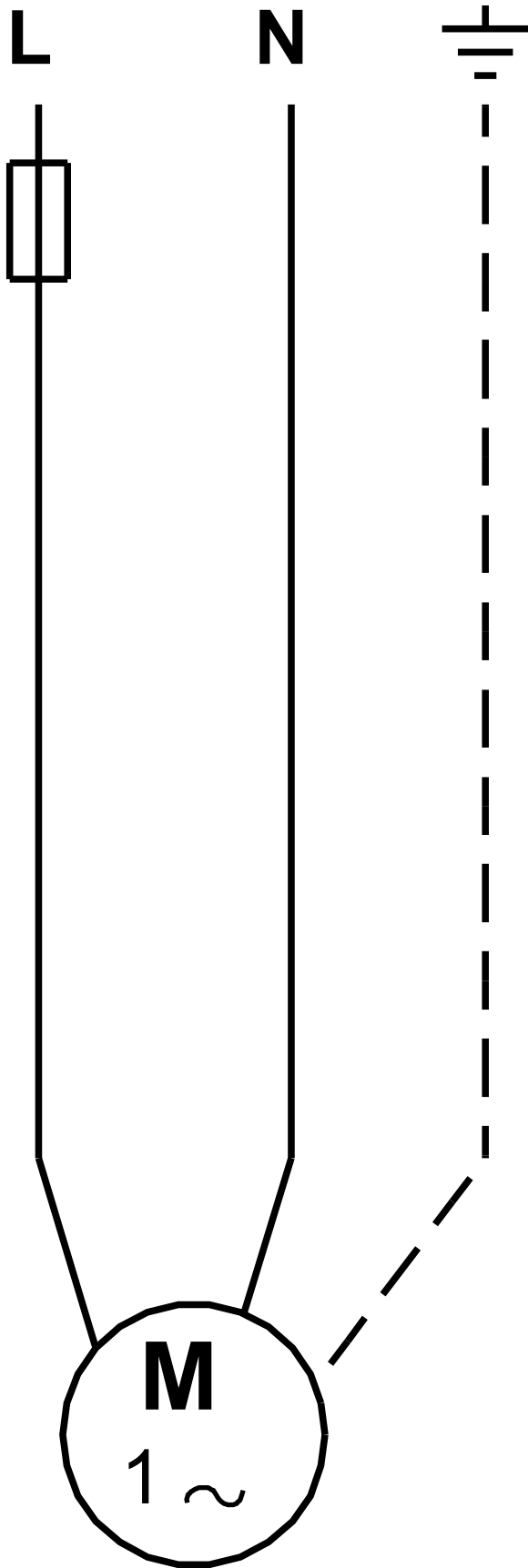


013N1400 Unilift KP 350 AV 1 50 Hz



Note! All units are in [mm] unless others are stated.
Disclaimer: This simplified dimensional drawing does not show all details.

013N1400 Unilift KP 350 AV 1 50 Hz



Note! All units are in [mm] unless others are stated.