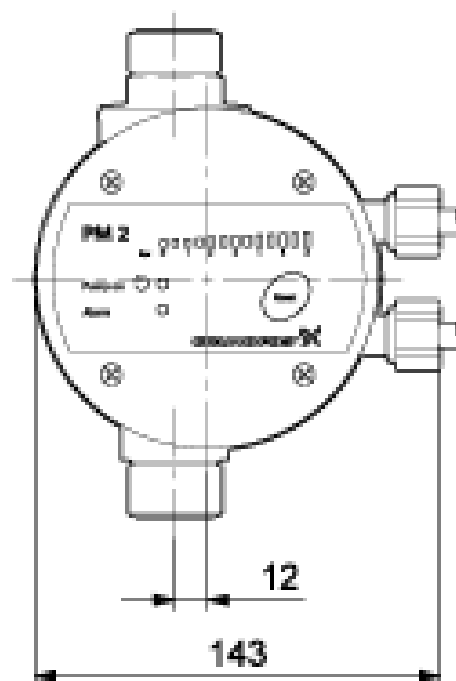
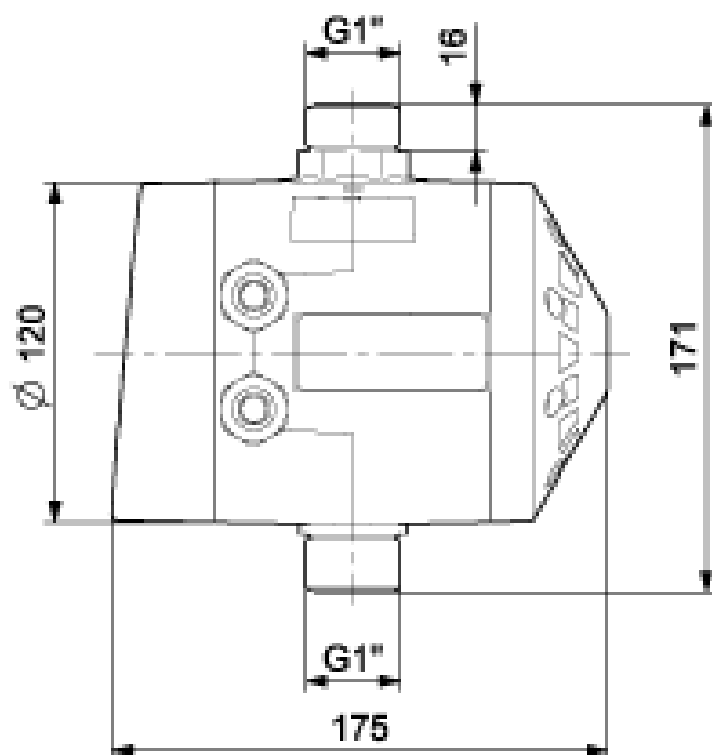


Qty.	Description
1	<p>Product name: PM 2 AD</p>  <p>Note! Product picture may differ from actual product</p> <p>Product No.: 96848738</p> <p>Grundfos PM2 pressure manager is an electronic pressure manager primarily for controlling Grundfos pumps, but it can also be used for other water supply pumps.</p> <p>The pressure manager offers an adjustable start from 1.5 to 5 bar, allowing for adaptation to the individual installation.</p> <p>The installation can be done either vertically, horizontally, or at an angle, if the space is confined.</p> <p>The display can be adjusted within 360 degrees to always have the optimal viewing angle.</p> <p>When the start pressure is reached, the pump is started and kept running as long as the pressure manager senses a flow.</p> <p>The pressure manager has an electronic interface with LED indicators, which shows the status for power on, pump running, and alarm indication.</p> <p>The pressure manager incorporates functions for pump and installation protection. These functions are dry running protection, cycling alarm, and maximum continuous operation time of 30 minutes. A non-return valve for backflow prevention is already integrated.</p> <p>The pressure manager can be optimised for operation with a large external pressure tank by enabling the 1 bar differential pressure function.</p> <p>This significantly reduces the number of operating hours of the pump in installations with a pressure tank.</p> <p>Additionally, the pressure manager features an LED pressure indication.</p> <p>Pressure managers are available as a stand-alone solution for a new or retrofit installation, or as part of a Grundfos domestic water solution.</p> <p>Controls:</p> <p>Dry running protection: YES</p> <p>Liquid:</p> <p>Liquid temperature range: 0 .. 40 °C</p> <p>Technical:</p> <p>Approvals: CE,C-TICK,EAC,WEEE</p> <p>Return valve: YES</p> <p>Adjustable start pressure: Y</p> <p>Start pressure: 1.5 - 5.0 bar</p> <p>Tank volume: 0.1 l</p> <p>Installation:</p> <p>Maximum ambient temperature: 50 °C</p> <p>Inlet connect: G1"</p> <p>Outlet connect: G1"</p> <p>Inlet thread: External</p> <p>Outlet thread: External</p> <p>Pres. Read-out: YES</p>

Qty.	Description
	<p>Electrical data:</p> <p>P1 max.: 2000 W</p> <p>Mains frequency: 50 / 60 Hz</p> <p>Suitable for 50/60 Hz: YES</p> <p>Rated voltage: 1 x 220-240 V</p> <p>Maximum current consumption: 10 A</p> <p>Enclosure class (IEC 34-5): IP65</p> <p>Others:</p> <p>Net weight: 1 kg</p> <p>Gross weight: 1.85 kg</p> <p>Shipping volume: 0.01 m³</p>

Description	Value
General information:	
Product name:	PM 2 AD
Product No:	96848738
EAN number:	5700311918753
Price:	
Technical:	
Approvals:	CE, C-TICK, EAC, WEEE
Return valve:	YES
Adjustable start pressure:	Y
Start pressure:	1.5 - 5.0 bar
Tank volume:	0.1 l
Installation:	
Maximum ambient temperature:	50 °C
Cut-in pressure:	1.5 - 5 bar
Inlet connect:	G1"
Outlet connect:	G1"
Inlet thread:	External
Outlet thread:	External
Pres. Read-out:	YES
Liquid:	
Liquid temperature range:	0 .. 40 °C
Electrical data:	
P1 max.:	2000 W
Mains frequency:	50 / 60 Hz
Suitable for 50/60 Hz:	YES
Rated voltage:	1 x 220-240 V
Maximum current consumption:	10 A
Enclosure class (IEC 34-5):	IP65
Controls:	
Dry running protection:	YES
Others:	
Net weight:	1 kg
Gross weight:	1.85 kg
Shipping volume:	0.01 m³

96848738 PM 2 AD



Note! All units are in [mm] unless others are stated.
Disclaimer: This simplified dimensional drawing does not show all details.